



# WACOP

WAVES & COASTS IN THE PACIFIC

Understanding the wave climate in the Pacific region is critical for coastal management and climate change adaptation. The Changing Waves and Coasts of the Pacific (WACOP) project is using the latest research tools to assess the baseline wave climate and its variability as well as the predicted changes in wave climate in the Pacific region.



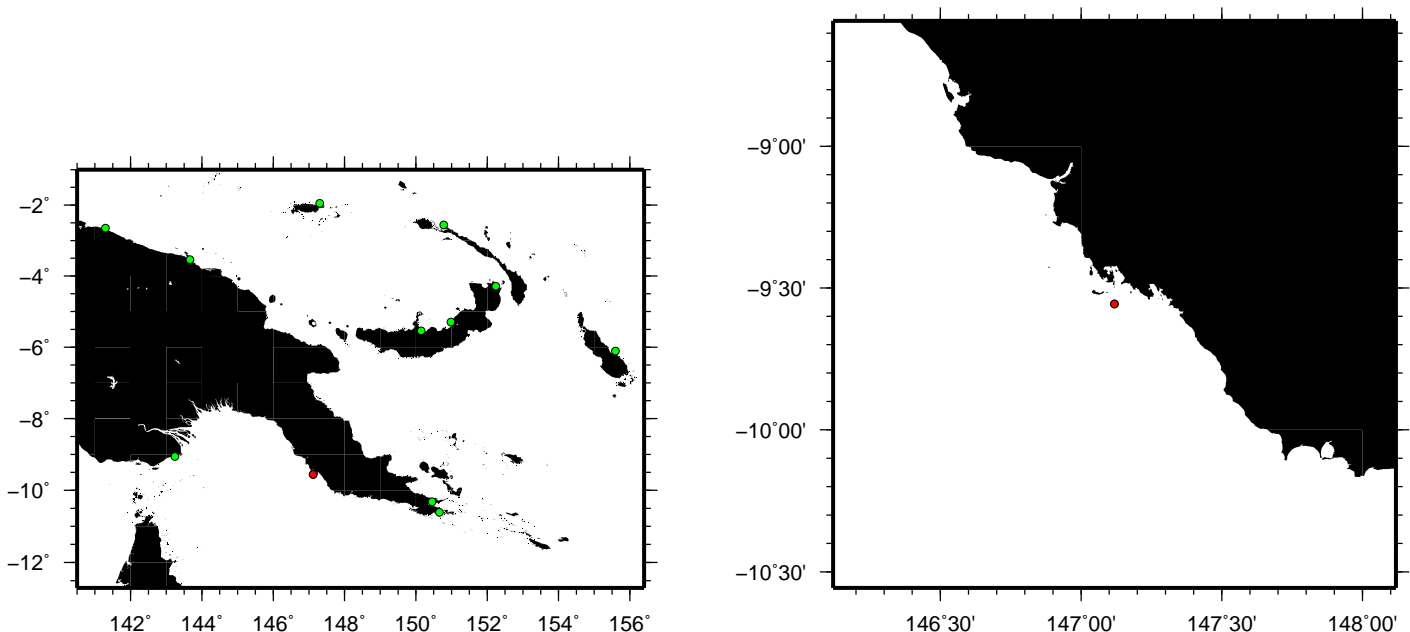
SPC  
Secretariat  
of the Pacific  
Community



# Wave Climate Report

## Port Moresby

### Papua New Guinea



**Figure 1.** Location maps of the site. The map on the left shows the region. The map on the right shows the island and its surroundings. The red point shows to the actual site and green points (if present) indicate other available wave climate reports in the region.

**For more informations contact:**

Cyprien Bosserelle  
Secretariat of the Pacific Community (SPC)  
Applied Geosciences and Technology division  
Postal address: Private Mail Bag, GPO, Suva, Fiji Islands  
Street address: Mead Road, Nabua, Fiji Islands  
Office Tel: +679 338 1377  
Email: [cyprienb@spc.int](mailto:cyprienb@spc.int)

A copy of this report is available  
at <http://gsd.spc.int/wacop/>



# I. General Wave Climate

## I.1 General Introduction

This wave climate report presents wave information for **Port Moresby** in Papua New Guinea. This report contains information about wind-generated surface gravity waves, often called wind waves and swell. The wave climate is defined here as the statistics of waves conditions over a 30 year period. The report details the average wave condition (page 2 and 3), the variability of wave conditions (page 4 and 5), severe and extreme waves (page 6 to 9) and characterises the wave energy resource (Page 10). Similar wave climate reports are available for more than 80 locations around the Pacific, near important ports, large settlements, tide gauge locations and areas where the wave climate is of particular interest. Other locations in Papua New Guinea are shown in Figure 1 (Previous page). Because little wave data exists for the Pacific, the information presented here was derived from a computer model: a regional wave hindcast. The wave hindcast evaluated the wave conditions in the region between 1979 and 2013. It was produced by the Centre for Australian Weather and Climate Research and focussed on the central and south Pacific with a resolution of 10 to 4 arcminutes (~20 to 8km) and therefore is accurate for offshore wave conditions. The model was constrained by the best available data and thoroughly verified against waves measurements. In the Pacific region, the wave hindcast produced reasonably good results with an average skill of 0.85 (skills between 0.8 and 0.9 are considered good, above 0.9 is considered excellent, see Table I.1). For more information about the regional wave hindcast, readers should refer to Durrant et al. (2014). This report was generated by a computer program created at SPC–Applied Geoscience and Technology Division which analysed the output from the wave hindcast and summarised the findings. Therefore, despite our best effort, this report may contain errors and omissions and should be used with caution.

**Table I.1** Validation of the Wave hindcast model used to evaluate the wave climate

Island (Country)	Longitude Latitude	Depth [m]	RMS [m]	Skill	Bias [m]
Efate (Vanuatu)	168.5500 –17.8750	285	0.419	0.905	0.309
Funafuti (Tuvalu)	179.2150 –8.52500	585	0.559	0.544	0.504
Kadavu (Fiji)	177.9567 –19.3067	356	0.355	0.910	–0.097
Rarotonga (Cook Islands)	200.2717 –21.2700	300	0.413	0.895	0.087
Tongatapu (Tonga)	184.7300 –21.2370	309	0.321	0.920	–0.039
Apolima St. (Samoa)	187.8000 –13.8800	104	0.394	0.871	0.241
Upolu (Samoa)	188.7800 –14.4150	850	0.347	0.883	0.146

# I. General Wave Climate (Cont.)

## I.2 Average Wave Conditions


Wave condition is usually defined by the significant wave height, the peak period and the peak direction. The significant wave height is defined as the mean wave height (from trough to crest) of the highest third of the waves and correspond to the wave height that would be reported by an experienced observer. The peak period is the time interval between 2 waves of the dominant waves. The peak direction is the direction the dominant waves are coming from. Note that this document uses the nautical convention and therefore reports the direction the waves(wind) are coming from, measured clockwise from geographic North.

This page provides information about the average wave climate of **Port Moresby** in Papua New Guinea. The average sea state is slight, dominated by wind seas from the South. The annual mean wave height is **0.94m**, the annual mean wave direction is **156°** and the annual mean wave period is **8.11s**. Table I.2 summarize the mean wave condition for Port Moresby.

In the pacific, waves often comes from multiple direction and with different period at a time. In Port Moresby, there are often more than 2 different wave direction/period components.

Wave conditions tend to be consistent, meaning that they vary little within a few hours. The mean annual and seasonal variability are reported in table I.2. For more information on the wave climate variability refer to page 5 and 6.

**Table I.2** Mean wave conditions calculated between 1979 and 2012 for Port Moresby

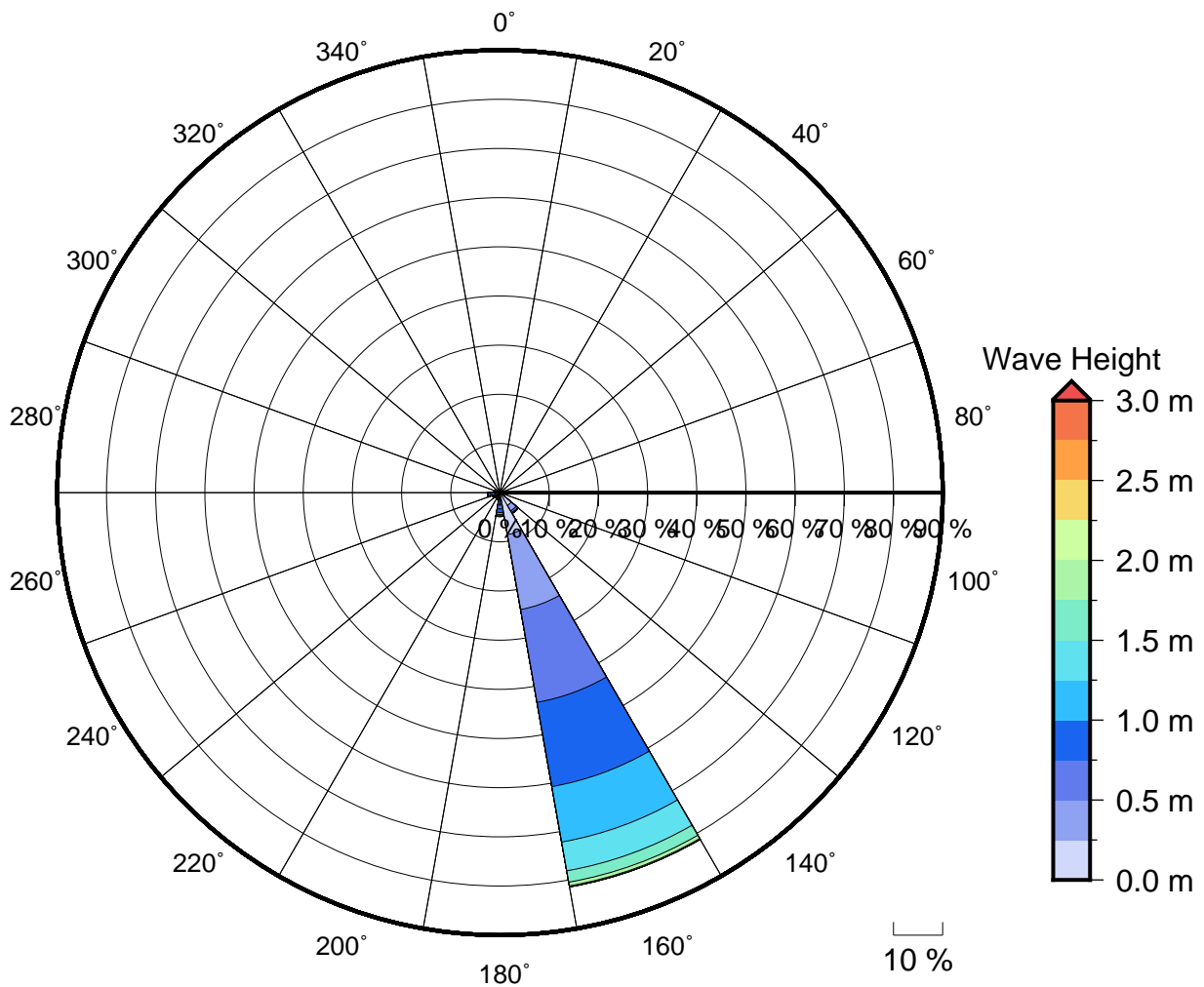
Mean wave height	0.94m
Mean wave period	8.11s
Mean wave direction [° True North]	156 ° 
Mean number of wave components	1.82
Mean annual variability [m] (%)	0.04 m (4.6 %)
Mean seasonal variability [m] (%)	0.42 m (44.2 %)

# II. Mean Wave Rose

## II.1 Annual mean wave rose

The mean wave condition, does not describe the variety of wave height and direction that can occur in Port Moresby. A better representation of the variety of waves is the wave rose (Figure 2). The annual wave rose shows where waves usually come from and the size of waves associated with each direction. It is a powerful illustration of the distribution of wave height and direction. The circles (polar axis) represents how often a wave direction/height happens (i.e. the percentage of occurrence); each circle shows the 10% occurrence with the outer circle representing 90% of the time. Each wedge represents a range of direction 20 degrees wide with the center direction of each wedge displayed on the outer circle. Wave heights are split into intervals of 0.25m. Each interval is associated with a colour on the scale right of the rose.

In Port Moresby the wave come from many sources. The conditions are often slight, almost never calm and almost never rough. The principal direction, where waves frequently come from is the South (160°).



**Figure 2** Annual wave rose for Port Moresby. Note that direction are where the wave are **coming from**.

# III. Wave Variation

## III.1 Introduction

The wave climate is rarely constant throughout the year and seasonal changes in wind patterns across the Pacific Ocean can greatly modify the wave conditions from one season to the next. This page provides a description of these variations in Port Moresby. The monthly variability (or coefficient of variation) of the wave height is used to quantify these variations, in Port Moresby the variability of the wave height is 44.2%. Typically, locations that are mostly exposed to trade winds show the smallest variation (less than 25%). Locations exposed to the Southern Ocean swell show more monthly variation (between 25 and 30%) and locations exposed to the North Pacific swell show the most monthly variation (>30%). The monthly variability gives an idea of how the wave condition changes from one month to the next but to better understand the seasonal changes requires to look at the seasonal wave roses (figure 3).

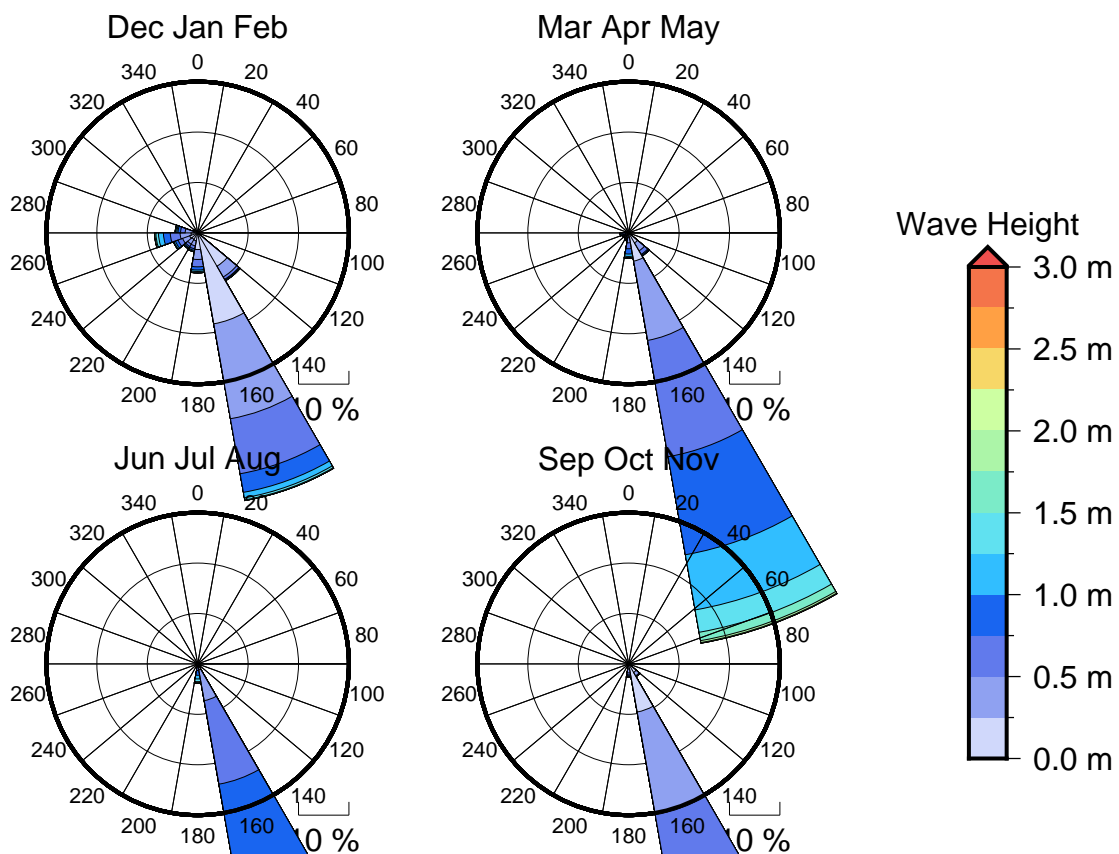


Figure 3 Seasonal wave roses for Port Moresby

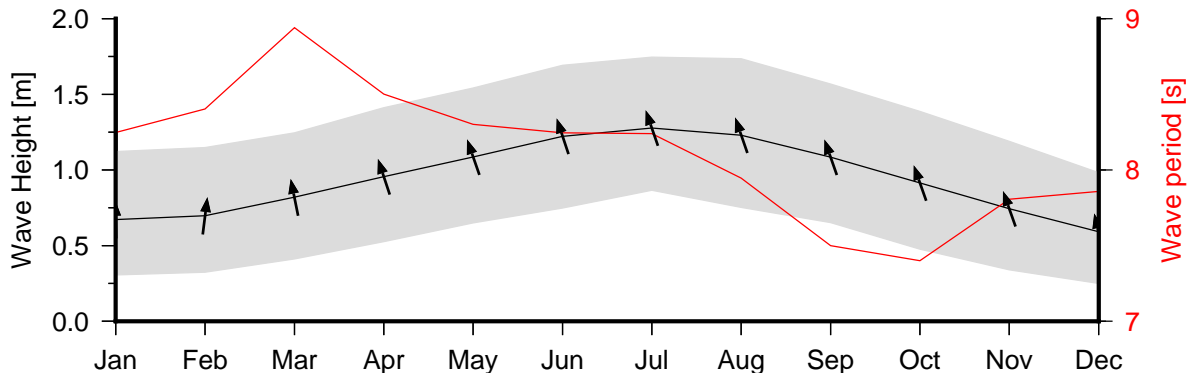
## III.2 Seasonal wave rose summary

In summer the dominant wave condition (occurring sometimes) is slight, the waves are almost never calm and almost never rough and the principal wave direction is from the South (160°). In autumn the dominant wave condition (occurring often) is slight, the waves are almost never calm and almost never rough and the principal wave direction is from the South (160°). In winter the dominant wave condition (occurring sometimes) is slight, the waves are almost never calm and almost never rough and the principal wave direction is from the South (160°). In spring the dominant wave condition (occurring often) is slight, the waves are almost never calm and almost never rough and the principal wave direction is from the South (160°).

# III. Wave Variation (Cont.)

## III.3 Monthly wave height, period and direction

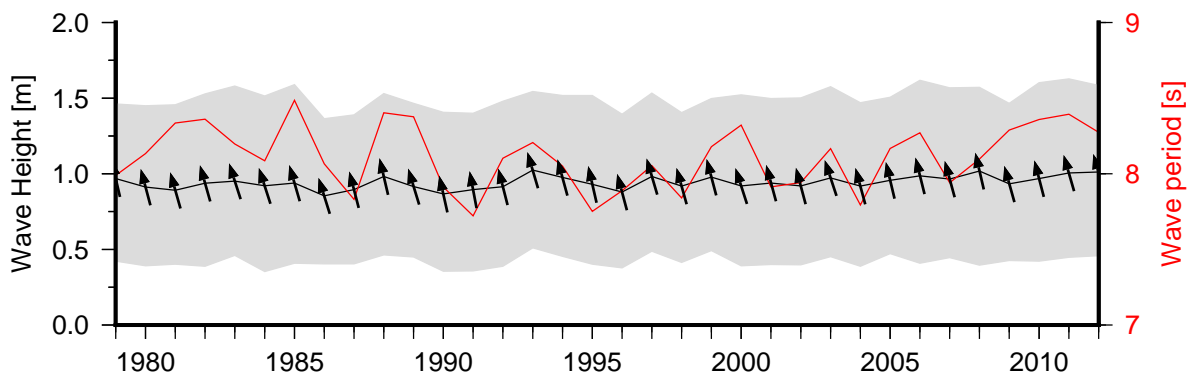
The monthly wave height, period and direction show the seasonal changes in the wave parameters with more details on the transition between seasons. The average wave height during calm periods (10% of the lowest wave height) and large swell events (10% of the largest wave heights) also changes with seasons. Figure 4 can help in finding the best month for servicing or installing offshore structures and moorings.



**Figure 4** Monthly wave height (Black line), wave period (Red line) and wave direction (arrows). The grey area represents the range of wave height between calm periods (10% of lowest wave height) and large wave events (10% of highest wave height)

## III.4 Annual wave height, period and direction

Waves change from month to month with the seasons but they also change from year to year with climate oscillations. Typically these changes are smaller than the seasonal changes but can be important during phenomenon such as El Niño. In Port Moresby, the inter-annual variability (or coefficient of variation) for wave height is 4.6%, The Pacific average region variability is typically 7%. In Port Moresby the mean annual wave height has remained relatively unchanged since 1979. The mean annual wave height in Port Moresby is correlated with the Southern Annular Mode ( $r=0.47$ ,  $p<0.05$ ), which is the dominant of the mode of atmospheric variation over the southern Ocean Storm belt. The 1997/1998 El Niño greatly affected the wave climate in the Pacific region and in most islands a dramatic change in the wave patterns could be observed (Figure 4.1).



**Figure 5** Annual wave height (Black line), wave period (Red line) and wave direction (arrows). The grey area represents the range of wave height between calm periods (10% of lowest wave height) and large wave events (10% of highest wave height)

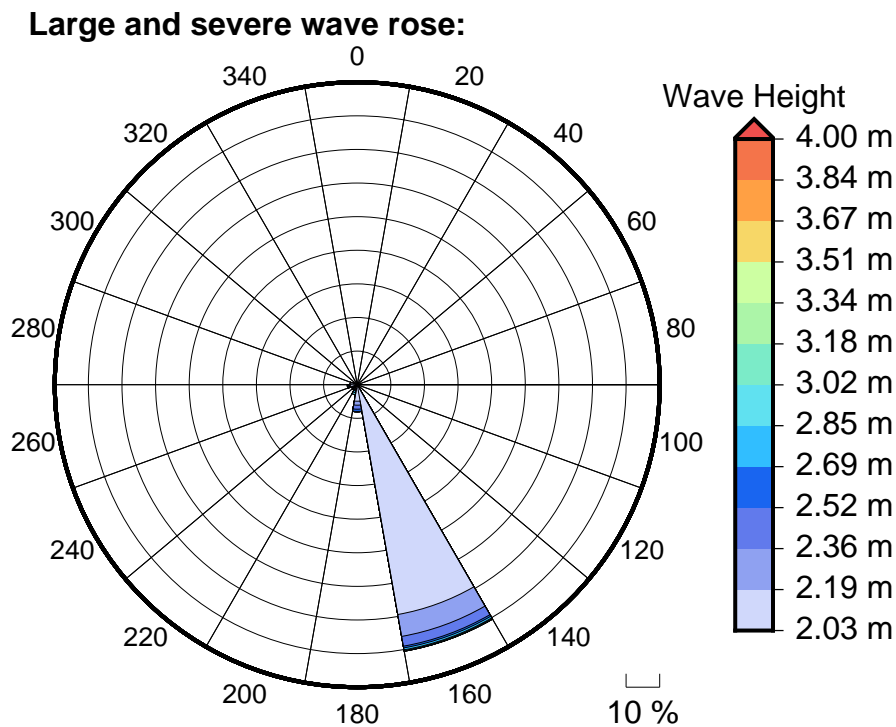
# IV. Large and Severe Waves

## IV.1 Introduction

From time to time the waves become larger to a point where they can cause erosion of the beaches and inundation of the shore. Large wave are waves that exceed the 90th percentile of the wave height. In other words large wave occur 10% of the time (37 days in a year). Large wave are typically the largest event expected each month. Large wave rarely cause damage on the coast or inundation but water activities during large wave events can be hazardous. Large wave events do cause coastal inundation and erosion when they occur at the same time than large spring tide such as perigean spring tides (also called king tides). In Port Moresby the threshold for large waves is 1.5m.

Severe waves are less common than large wave. They are the waves that occur less than 1% of the time (4 days in a year). Severe waves typically occur once or twice in a year. Severe waves can be associated with coastal erosion and inundation especially if they occur during spring tides and water activities are hazardous on the coast during these events. In Port Moresby the threshold for severe waves is 2.0m.

Large and severe waves can be generated by different weather events such as, cyclones, distant extra tropical storms and fresh trade winds. The direction and period of the waves are telltale of the origin of the large waves. This information can be derived from the large, severe and extreme wave rose (Figure 6). In Port Moresby, the dominant direction for wave height larger than 1.5m is from the South (160°).

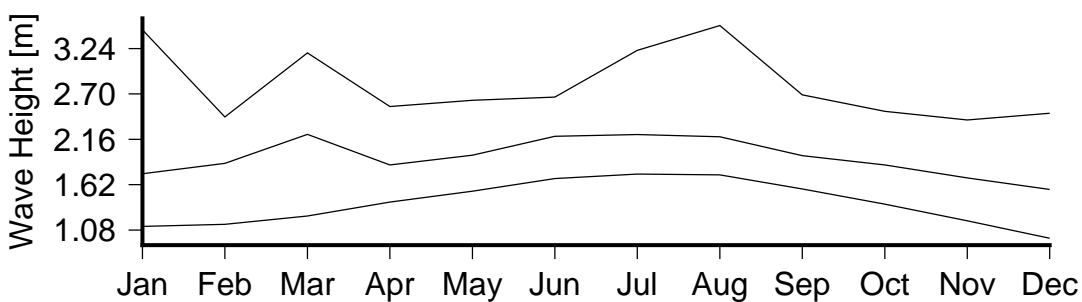


**Figure 6** Large, severe and extreme wave roses for Port Moresby

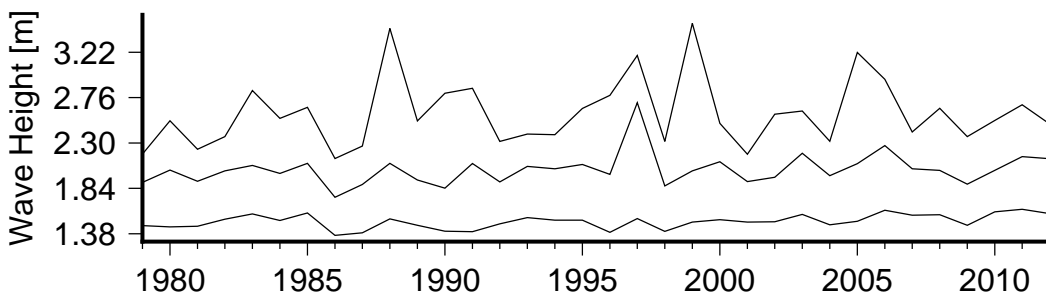
# IV. Large and Severe Waves (Cont.)

## IV.2 Large wave variability

Larger waves can be generated by different meteorological phenomena such as tropical cyclones, extra-tropical storm or fresh trade wind events. These meteorological events are very dependent on the seasons and so does the large waves. In Port Moresby large waves are bigger in winter(Jun). Large waves are also present during other seasons and the monthly variability of the large wave threshold (90th percentiles) for Port Moresby is 19% (Figure 7).As mean wave height varies from year to year so does the larger waves. In Port Moresby the annual variability for the large wave threshold is 5% (Figure 8).



**Figure 7** Monthly variation in large waves (90th percentile)(lower curve), severe waves (99th percentile) (middle curve) and the largest wave(upper curve) in Port Moresby.



**Figure 8** Annual variation in large waves (90th percentile)(lower curve), severe waves (99th percentile) (middle curve) and the largest wave(upper curve) in Port Moresby.



# V. Extreme waves

## V.1 Largest events

A list of the 30 largest wave events is presented in table 3 with the ranking, the date (UTC time), wave height, wave period and direction at the peak of the event. The largest event that reached Port Moresby since 1979 was on the 06-08-1999 and exceeded 4m which is considered moderate . All the listed events have a wave height higher than 2m which is considered slight . The list of the 30 largest events can be used to calculate the probability of occurrence of wave event larger than the average largest annual wave height. Such analysis, called an extreme wave analysis, is presented in the next page.

**Table 3** List of the 30 largest wave events in Port Moresby .

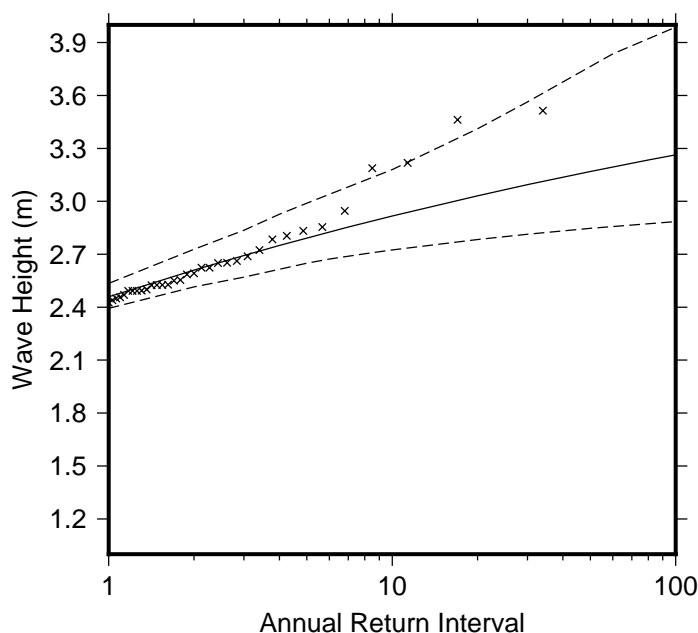
30 largest events				
Rank	Date	Height (m)	Period (s)	Dir. (°)
1	06-08-1999	3.51	12	163
2	11-01-1988	3.46	10	233
3	21-07-2005	3.22	12	163
4	11-03-1997	3.19	14	210
5	09-08-2006	2.95	11	160
6	05-03-1991	2.85	12	176
7	09-07-1983	2.83	10	169
8	18-03-1990	2.80	11	215
9	08-07-1996	2.78	11	173
10	25-07-1999	2.72	11	173
11	15-09-2011	2.69	9	159
12	28-06-1985	2.66	10	166
13	09-07-2008	2.65	10	166
14	08-08-1995	2.65	10	170
15	06-05-2003	2.62	11	161
16	05-07-2003	2.62	9	165
17	19-06-2002	2.59	9	169
18	22-06-2008	2.59	11	162
19	15-06-2006	2.55	11	162
20	30-04-1984	2.55	10	162
21	24-06-2010	2.53	11	159
22	10-08-1980	2.53	11	160
23	10-08-1988	2.53	9	163
24	10-08-1989	2.52	9	161
25	30-07-2000	2.50	9	158
26	22-07-2006	2.49	10	157
27	30-08-1988	2.49	10	164
28	29-08-2003	2.49	9	162
29	04-10-2012	2.49	10	159
30	17-12-1988	2.47	9	255

# V. Extreme waves (Cont.)

## V.2 Extreme wave analysis

Extreme wave analysis are used to assess the probability of occurrence of wave events larger than the severe wave height. It is often used to evaluate the vulnerability of communities to coastal inundation and to decide how high a seawall or a jetty needs to be built. Extreme wave analysis is a statistical analysis that looks at the distribution of past wave events and extrapolates (predict) the probability of occurrence of unusually large events that may have never been recorded. The probability of an event to occur within a year is often presented as an Annual Return Interval (ARI). The ARI is the probability of an event to occur within a year. For example the probability of a 100 year ARI event to occur within any given year is 1%. Similarly the probability of a 50 year ARI event to occur within any given year is 2%.

The analysis completed for Port Moresby was done by defining a threshold of severe heights and fitting a Generalised Pareto Distribution (hereafter GPD). The optimum threshold was selected at 1.91m. In the 34 year wave hindcast 278 wave events have reached or exceeded this threshold. The GPD was fitted to the largest wave height reached during each of these events (Figure 9). Extreme wave analyses are a very useful tool but are not always accurate because the analysis is very sensitive to the data available, the type of distribution fitted and the threshold used. For example, this analysis does not accurately account for Tropical Cyclone waves. More in-depth analysis is required to obtain results fit for designing coastal infrastructures and coastal hazards planning.



**Figure 9** Extreme wave distribution for Port Moresby. The crosses represents the wave events that occurred since 1979. The plain line is the statistical distribution that best fit the past wave events. The dotted line show the upper and lower high confidence of the fit, there is a 95% chance that the fitted distribution lie between the two dashed lines.

**Table 4** Summary of the results from extreme wave analysis in Port Moresby .

Large wave height (90 <sup>th</sup> percentile)	1.50 m
Severe wave height (99 <sup>th</sup> percentile)	2.03 m
1 year ARI wave height	2.46 m
10 year ARI wave height	2.92 m
20 year ARI wave height	3.03 m
50 year ARI wave height	3.17 m
100 year ARI wave height	3.26 m

# VI. Wave energy

## VI.1 Introduction

Ocean waves are often cited as an appealing renewable energy resource because waves are a dense energy resource that is consistently present in some location. However, extracting wave energy is challenging because of the oscillating nature of waves and because of the harshness of the ocean environment. Yet some wave energy converters (e.g. Pelamis device) have reached a level of efficiency and reliability that is sufficient to generate electricity at a competitive cost if the resource is sufficient.

The wave energy resource is usually summarised by the mean annual wave energy flux (wave power). Typically locations with a mean annual energy flux above 7 kW/m should further investigate the feasibility of wave energy converters. In Port Moresby the mean annual energy flux is 3.6kW/m. Further site investigations should include a detailed assessment of the resource, environment and requirements for the most appropriate device for the site. The Pelamis device, a former prominent wave energy converter, can be used as a benchmark to compare between potential wave energy sites and between locations. In the Pacific, the total lifetime cost of a single device like the Pelamis is expected to be between \$US6,318,000 and \$US14,104,000.

In order to calculate the energy generated by a single device, similar to the Pelamis, the probability of occurrence of all sea states has to be calculated. This is done by calculating the percentage of time that a particular combination of wave height and wave period occur. The occurrence of sea states for Port Moresby is presented in figure 10. This can then be combined with estimated power outputs from a Pelamis device for each of these sea states. In Port Moresby the average annual energy output of a single device similar to the pelamis is expected to be 163MWh. Combined with the expected capital cost of a single device the cost of electricity generation of wave energy from a single Pelamis device in Port Moresby is between 1548\$US/MWh 3456\$US/MWh.

Wave energy is unlikely to be a suitable renewable energy resource in Port Moresby.

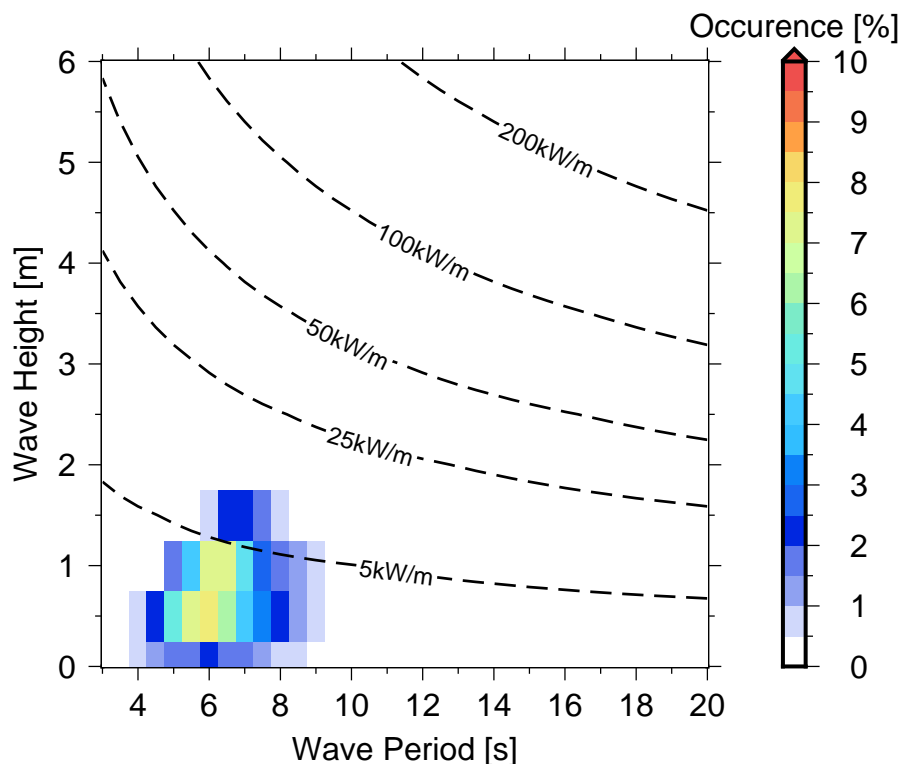


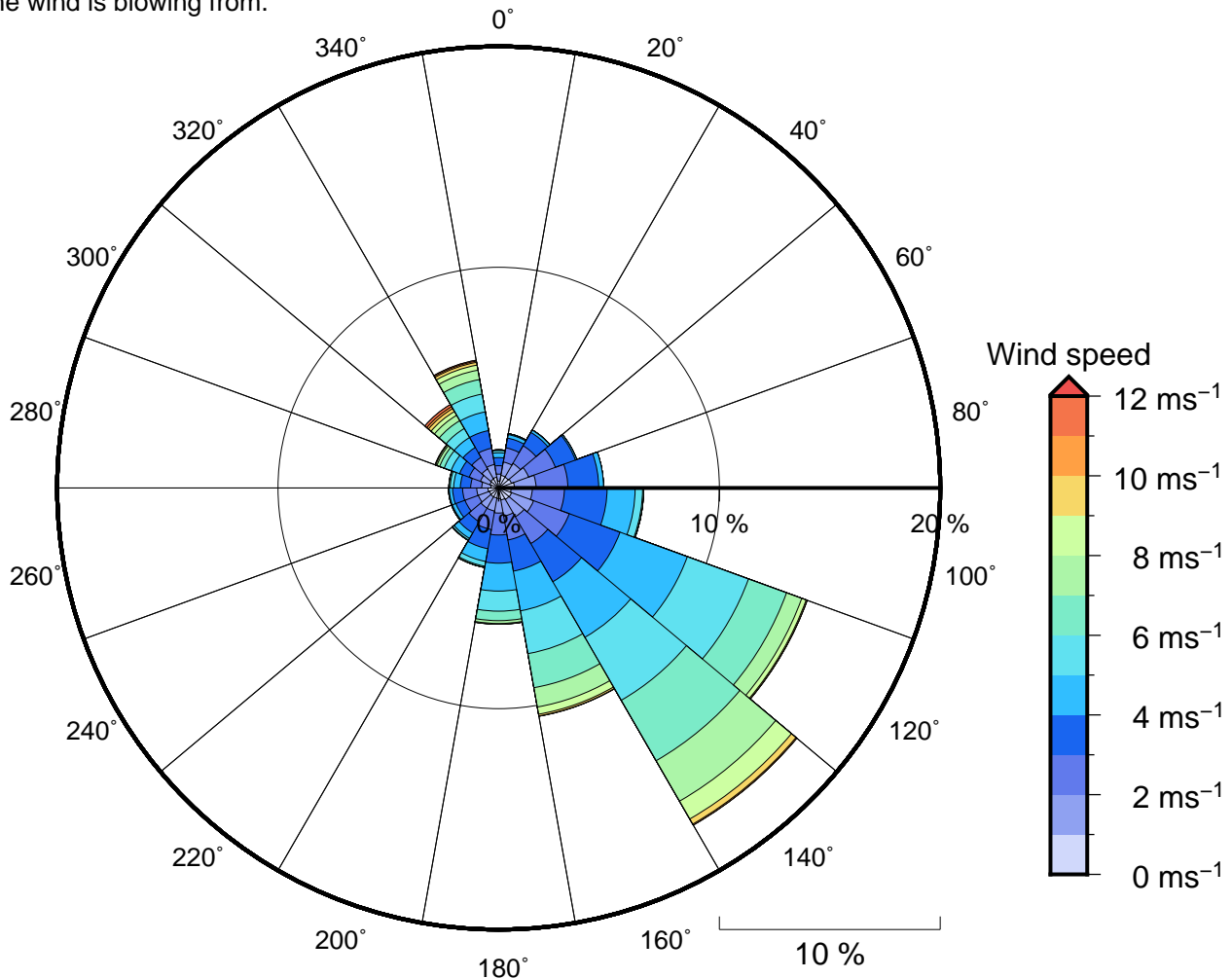
Figure 10 Occurrences of sea states in Port Moresby .

Read more: <http://gsd.spc.int/wacop/> :  
Cost Analysis of Wave Energy in the Pacific report.

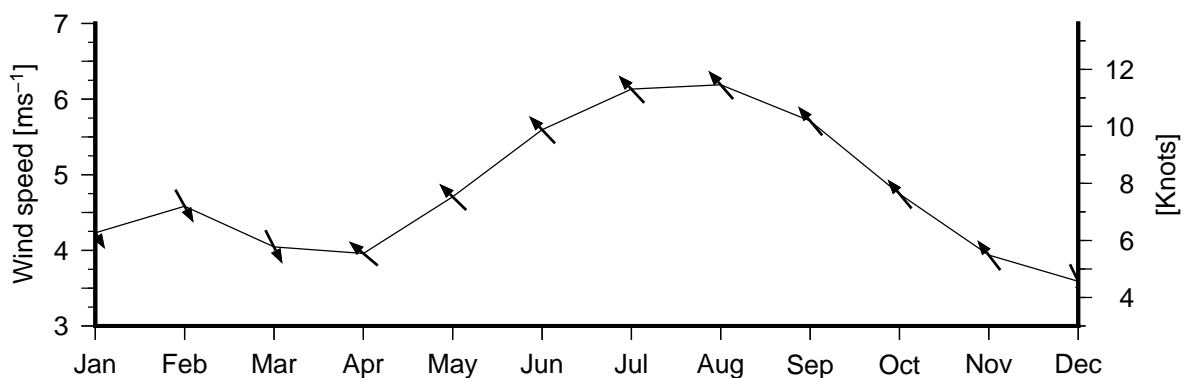
# VII. Wind

## VII.1 Introduction

Wind is the origin of all waves and although swells are created by distant wind events, local winds can significantly affect the local waves. In Port Moresby the prevailing wind is dominated by South Easterly trade winds. with a mean wind speed of  $4.79\text{ms}^{-1}$  ( $9.31\text{knts}$ ) from the  $134^\circ$ . Figure 11 shows the wind rose for Port Moresby and Figure 12 shows the monthly mean wind speed and direction. Note that the results presented here use the nautical convention: directions shown are the directions the wind is blowing from.



**Figure 11** Annual wind rose for Port Moresby. Note that directions are where the wind is **coming** from.



**Figure 12** Monthly wind speed (Black line) and wind direction (arrows).

# Glossary

## **Autumn**

Autumn is the transition season between summer (wet season) and winter (dry season), best noticed by low wind speed and change in wind direction and warm seas. This is typically when the largest cyclone occur.

## **Climate oscillation**

A climate oscillation or climate cycle is any recurring cyclical oscillation within global or regional climate, and is a type of climate pattern.

## **El Niño**

El Niño events are large climate disturbances which are rooted in the tropical Pacific Ocean that occur every 3 to 7 years. They have a strong impact on the weather around the tropical Pacific, and some climatic influence on half of the planet.

## **Hindcast (wave)**

The prediction of wave characteristics using meteorological information combined in a model, this is often used when measurements of these features are not available.

## **Mean number of wave components**

Represents the mean number of wave events occurring at any given time. These values describe the complexity of the wave climate.

## **Mean annual variability**

Is the standard deviation in annual mean wave height. In other word, it is the average changes in the mean wave height expected from one year to another.

## **Mean seasonal variability**

Is the standard deviation in the wave height within a year. In other word it is the average changes in wave height from one season to another

## **Offshore Zone**

Coastal waters to the seaward of the nearshore zone. Swell waves in the offshore zone are unbroken and their behaviour is not influenced by the seabed.

## **Spring**

Spring is the transition season between winter (dry season) and summer (wet season) during which we see days getting longer, temperatures warming.

## **Summer**

Time of year when part of the Earth receives the most daylight: In the Pacific. Summer is often associated with increase rainfall and often referred to as the wet season.

## **Swell Waves**

Wind waves that have travelled far from the area of generation (fetch). They are often uniform and orderly appearance characterised by regularly spaced wave crests.

# Glossary (Cont.)

## **Wave climate**

Wave climate is the average wave condition in a given region over a long period of time, usually 30 years. It is the measure of the average pattern of variation in "variables", such as wave height, wave period, and wave direction. As an example, seasonal variability in significant wave height may be characterized by calculating the monthly mean significant wave heights from several years of measurements.

## **Wave Direction**

The direction from which ocean waves approach a location (Following the nautical convention). Generally, the principal wave direction is represented by the direction of the principal wave component.

## **Wave Height**

The vertical distance between a wave crest and the next trough. The significant wave height is defined as the mean wave height (from trough to crest) of the highest third of the waves and correspond to the wave height that would be reported by an experienced observer.

## **Wave Period**

The time taken for consecutive wave crests or wave troughs to pass a given point. The peak period is the time interval between 2 waves of the dominant wave component.

## **Wave Power**

The rate at which wave energy is transmitted in the direction of wave propagation. Normally expressed in kilowatts per metre of wave crest length.

## **Wave rose**

The annual wave rose shows where waves usually come from and the size of waves associated with each direction. It is a powerful illustration of the distribution of wave height and direction.

## **Wind Waves**

The waves initially formed by the action of wind blowing over the sea surface. Wind waves are characterised by a range of heights, periods and wave lengths. As they leave the area of generation (fetch), wind waves develop a more ordered and uniform appearance and are referred to as swell or swell waves.

## **Winter**

Time of year when part of the Earth receives the least daylight. In the Pacific it is often associated with a decrease in rainfall and often referred to as the dry season.

# Acknowledgements

This document has been created by an automated script authored by Cyprien Bosserelle, Sandeep Reddy and Deepika Lal. When Referencing this work: Bosserelle C., Reddy S., Lal D., (2015) WACOP wave climate reports. Papua New Guinea, Port Moresby. Secretariat of the Pacific Community. Available at <http://gsd.spc.int/wacop/>.

This document has been produced with the financial assistance of the European Union under the WACOP project (Grant number FED/2011/281–131).

The data used in this report is from the hindcast model by Trentham et al. (2014):

Trentham C. E., Hemer M. A., Durrant T. H. and Greenslade D. J. M., (2014) PACCSAP wind–wave climate : high resolution wind–wave climate and projections of change in the Pacific region for coastal hazard assessments. CAWCR Technical Report No. 068.

The figures in this document were created using the Generic Mapping Tools software (<http://gmt.soest.hawaii.edu/>).

# Disclaimer

This document has been produced with the financial assistance of the European Union. The contents of this document are the sole responsibility of SPC–Geoscience Division and can under no circumstances be regarded as reflecting the position of the European Union. The information contained in the wave reports are supplied in good faith and believed to be accurate but no warranty is given in respect to errors or omissions. Although examples are given on the potential use of the information contained in the wave reports, no warranty is given in respect to suitability for any purpose.